



TK International
020 7794 8700
www.t-k.co.uk

Residential Sales
Residential Lettings
Property Management

Sales Office:
9 Heath Street
Hampstead
London NW3 6TP
E: sales@t-k.co.uk

Lettings Office:
16-18 Heath Street
Hampstead
London NW3 6TE
E: lettings@t-k.co.uk

tk.international
TK International
TK International

Est.
1998



West Heath Road Hampstead NW3

A landmark, double fronted detached six bedroom family house of some 3,986 sq ft (370.3 sq m) with a noted rendered stucco facade and set behind a carriage driveway accessed via electronic gates.

This handsome house offers excellent lateral accommodation comprising on the ground floor a 27' reception room, intercommunicating with a dining room which in turn intercommunicates with the kitchen/family room. There is also a study, a large utility room and guest WC.

The first and second floors offer a master suite with walk-in 'his and hers' dressing room, en-suite bathroom with Jacuzzi bath and double steam shower, four/five further bedrooms (three of which have en-suite bathroom/shower rooms) as well as a family bathroom,

The property is offered in good decorative condition throughout and benefits both from secure parking to the front for six/seven cars as well as a wide 60' x 31' rear garden.

Both the open spaces of West Heath and beautiful Golders Hill Park are located less than a five minute walk away as well as the wide choices of shops, cafes and transport facilities of Golders Green.

Council Tax Band: H
Deposit: 6 Weeks Rent

£10,500 Per Month

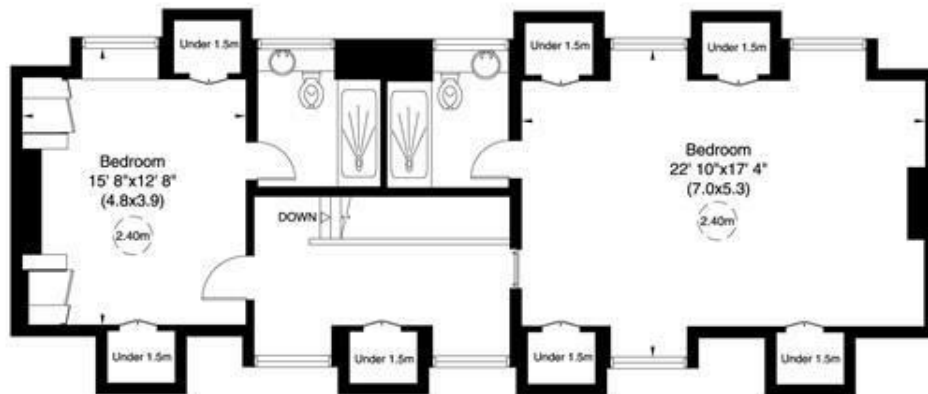
SOLE AGENT



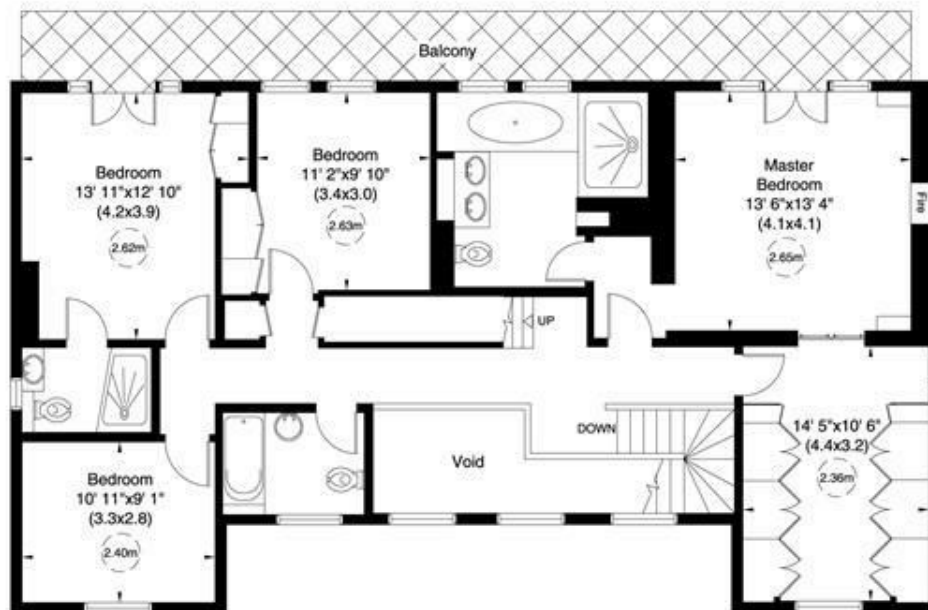








Second Floor



First Floor